



New Frameless Glass Barriers that Comply with B1/AS1



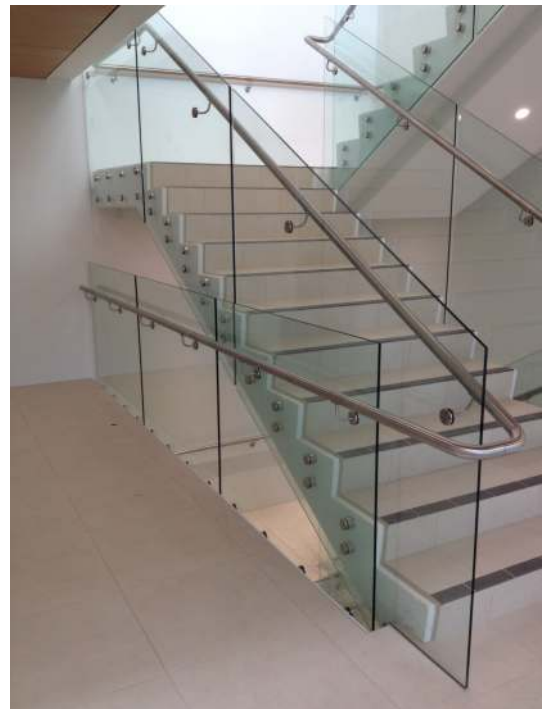
In Early May 2016 the Ministry of Business Innovation & Employment notified the industry that they intend to amend the glass barrier requirements in the acceptable solution B1/AS1, to those requirements in NZS 4223.3:2016.

This amendment is due to come into effect on June 01 - 2016. This time line is extremely short and has caused considerable concern within the industry. Feedback and concerns re this time line from industry bodies such as GANZ have been ignored, hence we are now in the through of adjusting to these changes.

Canterbury Balustrade have systems and products to meet these new requirements and have been supply and installing frameless glass designed balustrades in Christchurch for over 20 years.

We are able to offer a range of balustrade systems with different glass types and attachments to meet the wide range of designs and safety requirements.

This means Canterbury Balustrade Ltd can continue to offer a complete balustrade solution.



Toughened Safety Glass With Interlinking Rail

Glass Type

Toughened Safety Glass with interlinking rail connected to each pane of glass and to the building. Toughened glass is stronger and breaks in a safe manner compared to normal glass. In the unlikely event of the glass breaking the glass will fracture into small safe fragments.



Benefits

- If the glass breaks, the interlinking rail provides a barrier to minimise the risk of people falling.
- Top edge rail capping protects the edge of the glass.

Additional Hardware Requirements

Top edge mounted continuous interlinking capping or bracket mounted continuous rail connected to each pane of glass and to the building



Toughened Laminated Safety Glass With EVA Interlayer

Glass Type

Toughened Laminated Safety Glass with EVA interlayer with either interlinking glass clamps or capping. In the event of the glass breaking, the fragments of glass stay bonded to the interlayer. Interlinking clamps or capping will prevent glass collapse in case of dual pane fracture.

Benefits

- If the glass breaks, glass fragments remain firmly bonded to the interlayer, eliminating fragments falling over the edge.
- Retains its clarity; is extremely durable and resistant to clouding, even after years of exposure.

Additional Hardware Requirements

Top edge or bracket mounted continuous interlinking rail or interlinking glass clamps.



Glass With SentryGlas® Interlayer

Glass Type

Toughened Laminated Safety Glass with SentryGlas® structural interlayer. SentryGlas® interlayers are five times stronger and up to 100 times stiffer than other conventional interlayers. This interlayer stays together and erect even when both panes of glass have been broken.

Benefits

- Low deflection and stiff interlayer.
- Resistance to collapse; the rigid interlayer keeps the glass erect even after glass breakage.
- If the glass breaks, glass fragments remain firmly bonded to the interlayer, eliminating fragments falling over the edge.
- Retains its clarity; is extremely durable and resistant to clouding, even after years of exposure.

